

TRANSITION ART TASK

WELCOME TO THE ART DEPARTMENT AT MAGHULL HIGH SCHOOL, WE CAN'T WAIT TO MEET YOU AND SEE YOUR ARTWORK! WE HAVE SET YOU THIS TASK SO THAT WE CAN LEARN MORE ABOUT YOU, YOUR ART SKILLS AND INTERESTS. WE UNDERSTAND THAT EVERYONE HAS DIFFERENT EXPERIENCE OF ART, SO ALL WE ASK IS THAT YOU TRY YOUR BEST.

EQUIPMENT YOU WILL NEED:

- 1 PIECE OF PAPER
- PENCILS/FELT TIP PENS
- GLUE
- SCISSORS
- A PHOTOGRAPH OR DRAWING OF YOURSELF

TASK:

DECORATE A PORTRAIT OF YOURSELF WITH DRAWINGS AND KEYWORDS THAT LINK TO YOUR PERSONALITY, HOBBIES AND INTERESTS.

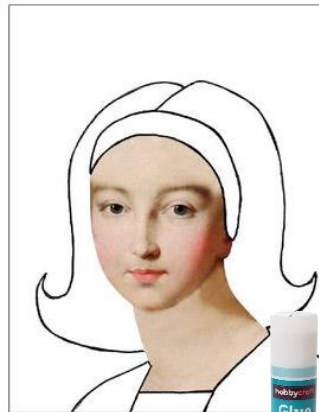
IF YOU DO NOT HAVE ACCESS TO A PHOTOGRAPH OF YOURSELF THAT YOU CAN USE THEN YOU CAN DRAW YOURSELF INSTEAD.

OUTCOME:

1 DRAWING.



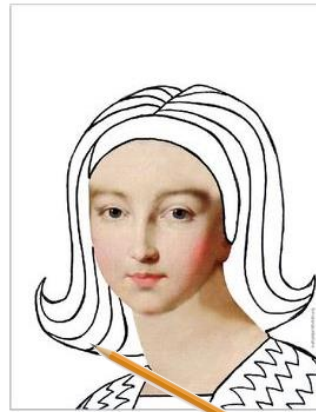
Empress Elisabeth Alexeievna of Russia by Louise Elisabeth Vigée Le Brun



STEP TWO:

CUT OUT THE PHOTOGRAPH SO ONLY THE FACE AND NECK ARE LEFT.

GLUE IT ON TO A SHEET OF PAPER – USE WHICHEVER SIZE PAPER FITS YOUR PHOTO BEST.



STEP THREE:

DRAW HAIR AND CLOTHING AROUND THE FACE AND NECK. IT DOES NOT NEED TO BE YOUR REAL HAIR – YOU CAN USE YOUR IMAGINATION INSTEAD.



STEP FOUR:

DRAW PATTERNS IN EACH SECTION OF THE PORTRAIT. YOU CAN USE SOME OF THE PATTERNS FROM THIS WORKSHEET AS INSPIRATION.

STEP ONE:

FIND OR PRINT A PHOTOGRAPH OF YOURSELF. MAKE SURE YOU HAVE A PARENT/GUARDIAN'S PERMISSION TO USE THE PHOTOGRAPH. IF YOU DO NOT HAVE A PHOTOGRAPH OF YOURSELF YOU CAN DRAW YOURSELF INSTEAD.

STEP FIVE:

ADD KEYWORDS TO YOUR DRAWING IF YOU WISH, SUCH AS YOUR NAME, INTERESTS, HOBBIES OR PERSONALITY TRAITS.

IF YOU HAVE ACCESS TO COLOURED PENCILS OR FELT TIP PENS ADD COLOUR TO THE DESIGN.

YOU CAN TAKE A LOOK AT THE IMAGES TO THE RIGHT FOR INSPIRATION.

